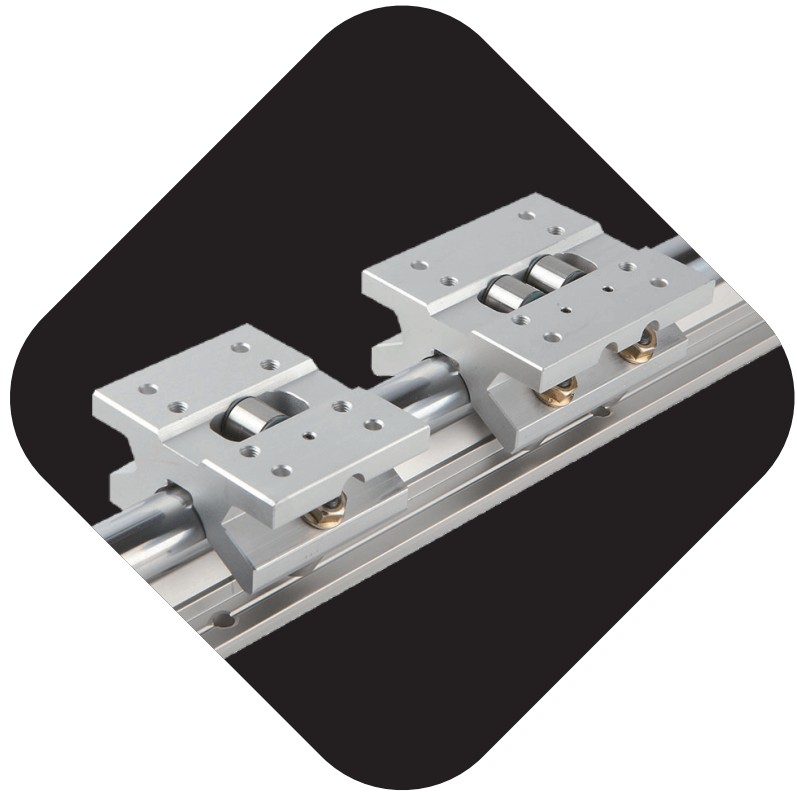


5

Round Shaft
Linear Guide

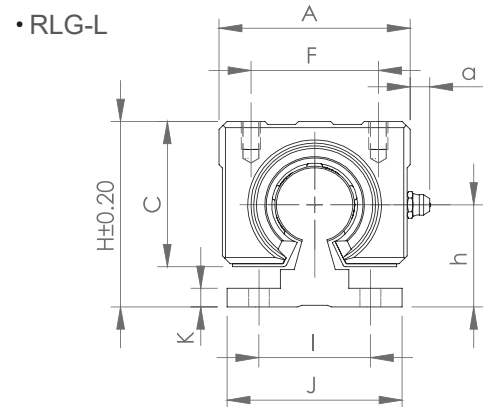
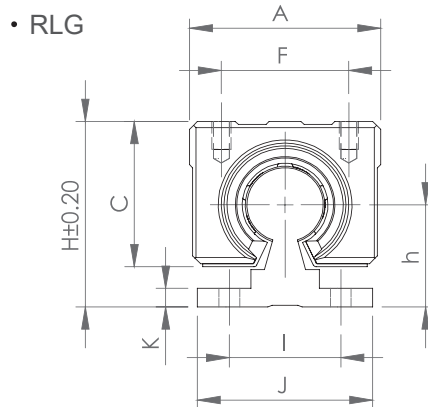
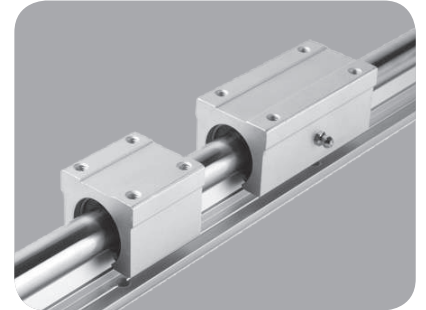


5.1 RLG Standard type

Ordering Key : **RLG 20 X 0810 - B2 (40,20)**

① ② ③ ④ ⑤

- ① Block type
RLG : Standard Block type
RLG-L : Extended length Block type
- ② Shaft diameter : $\varnothing 20$ mm
- ③ Rail length : 810 mm
- ④ Number of blocks : 2
- ⑤ End distance of screw hole : 40, 20
(Evenly spaced on both end if not specific)

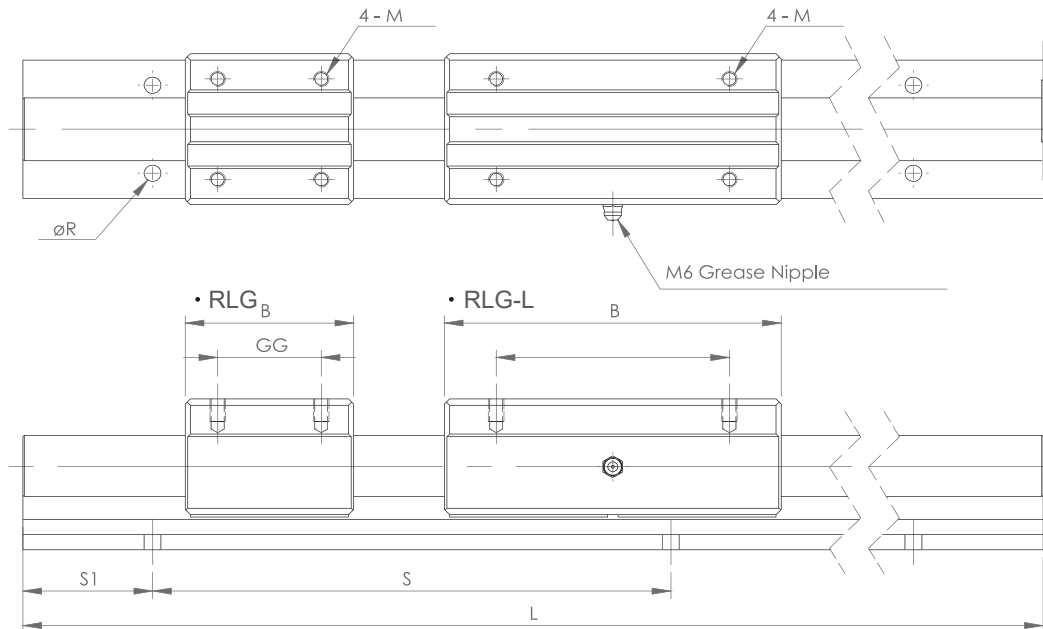


Unit : mm

Model No.	Shaft Dia.	Dimensions										
		A	a	B	C	F	G	H	h	I	J	K
RLG10	Ø10	36	7.5	32	24	25	20	33	18	22	32	4
RLG10L				65			40					
RLG12	Ø12	36	7.5	34	24	26	24	34	18.5	23	32	4
RLG12L				68			45					
RLG13	Ø13	40	7.5	39	28	28	26	38	21	25	34	4.5
RLG13L				75			50					
RLG16	Ø16	45	7.5	45	33	32	30	45	25	30	40	5
RLG16L				85			60					
RLG20	Ø20	48	7.5	50	39	35	35	50	27	30	45	5
RLG20L				95			70					
RLG25	Ø25	60	7.5	65	47	40	40	60	33	35	55	6
RLG25L				130			90					
RLG30	Ø30	70	7.5	70	56	50	50	70	37	40	60	7
RLG30L				140			100					
RLG35	Ø35	80		80	63	55	55	80	43	45	65	8
RLG40	Ø40	90		90	72	65	65	90	48	55	75	9
RLG50	Ø50	120		110	92	94	80	115	62	70	95	11

Features

- 1 Heat treated and hard chromium plated SUJ2 shaft
- 2 Shaft is fully supported to prevent unwanted shaft deflection in heavy load and long stroke conditions
- 3 Available in Standard, or Extended length block type



Unit : mm

Dimensions (mm)					Bearing Model	Basic Load Rating (kgf)		
L	M	$\varnothing R$	S	S1 *		C	C ₀	
200-4000	M5	4.5	100	1/2 S	LM 10-OP	38	56	
200-4000	M5	4.5	100		LM12-OP	60	112	
200-3000	M5	4.5	100		LM 13-OP	52	80	
200-4000	M5	5.5	150		LM 16-OP	83	160	
200-6000	M6	5.5	150		LM 20-OP	79	120	
300-6000	M6	6.5	200		LM 25-OP	125	240	
300-6000	M8	6.5	200		LM 30-OP	90	140	
300-6000	M8	9	200		LM 35-OP	142	279	
400-6000	M10	9	300		LM 40-OP	100	160	
400-6000	M10	11	300		LM 50-OP	159	320	
							160	280
							253	560
							170	320
							220	410
						389	810	

Note: S1 value will be 1/2 S or evenly spaced on both end if not specific.

Standard

Ball Caged

Miniature

Cam Roller

Round Shaft

Ball Screw

Support Unit

Self-lubricated Linear Bearing

Other components

Linear Guide

Ball Screw

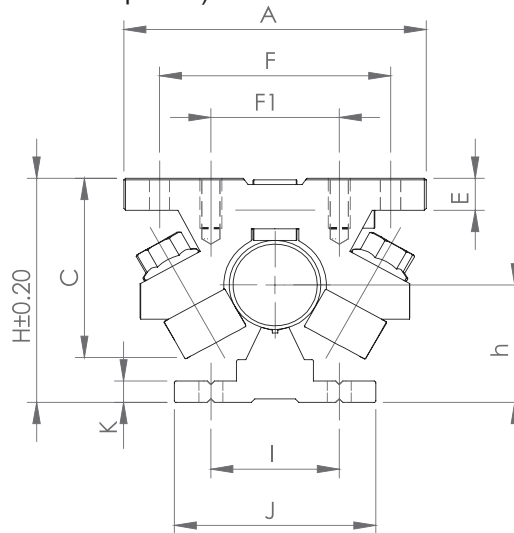
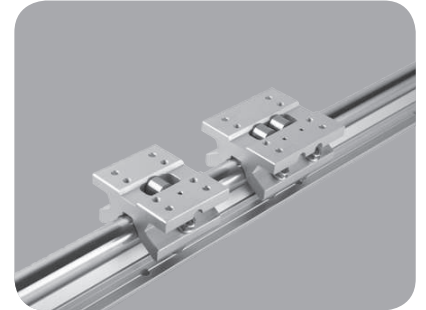
Other components

5.2 RLR High impact type

Ordering Key : RLR 20 X 0860 - B2 (40,20)

① ② ③ ④ ⑤

- ① Block type
RLR : Standard Block type
RLR-L : Extended length, heavy load Block type
- ② Shaft diameter : $\varnothing 20$ mm
- ③ Rail length : 860 mm
- ④ Number of blocks : 2
- ⑤ End distance of screw hole : 40, 20
(Evenly spaced on both end if not specific)

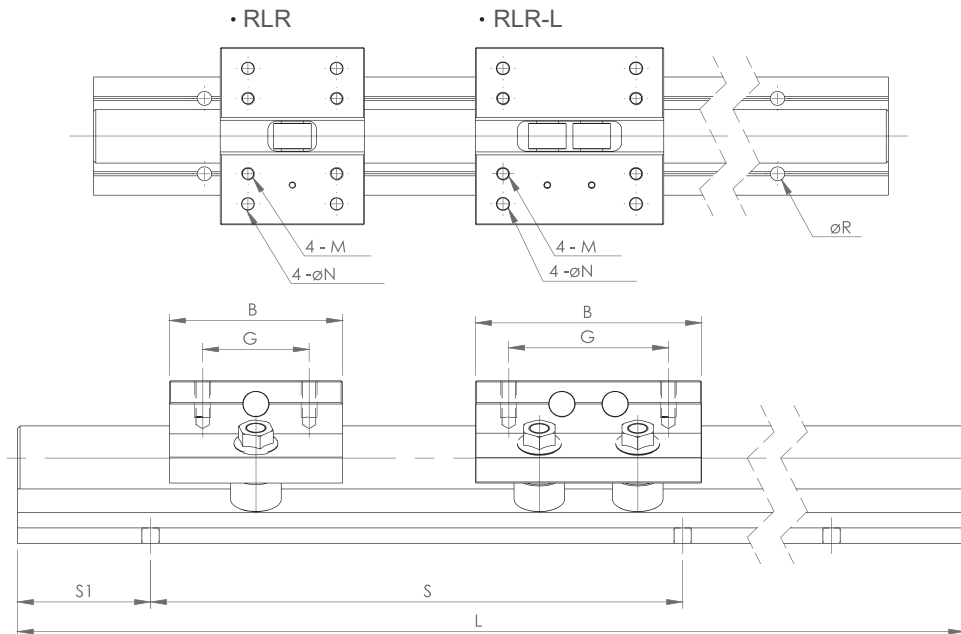


Unit : mm

Model No.	Shaft Dia.	Dimensions									
		A	B	C	E	F	F1	G	H	h	I
RLR 20	Ø20	70	55	41.6	8	50	27	32	51.6	27	30
RLR 20L			75					46			
RLR 25	Ø25	83	65	49.6	9	63	35	40	63	33	35
RLR 25L			85					60			
RLR 30L	Ø30	95	100	59.5	12	73	40	73	72	37	40

Features

- 1 Heat treated and hard chromium plated SUJ2 shaft
- 2 Shaft is fully supported to prevent unwanted shaft deflection in heavy load and long stroke conditions
- 3 Available in Standard, or Extended length block type
- 4 Roller clearance adjustable on block
- 5 RLR series feature in high load capacity, low noise, and high impacts capability



Dimensions (mm)								Basic Load Rating (kgf)	
J	K	L	M	ØN	ØR	S	S1 *	C	C ₀
45	5	300 - 6000	M5	4.3	5.5	200	1/2 S	230	150
						200		460	300
55	6	300 - 6000	M6	5.5	6.5	200		350	270
						200		700	540
60	7	300 - 6000	M8	6.5	6.5	200	1450	1100	

Note: S1 value will be 1/2 S or evenly spaced on both end if not specific.

Standard

Ball Caged

Miniature

Cam Roller

Round Shaft

Ball Screw

Support Unit

Self-lubricated Linear Bearing

Linear Guide

Ball Screw

Other components