



An Ewellix company

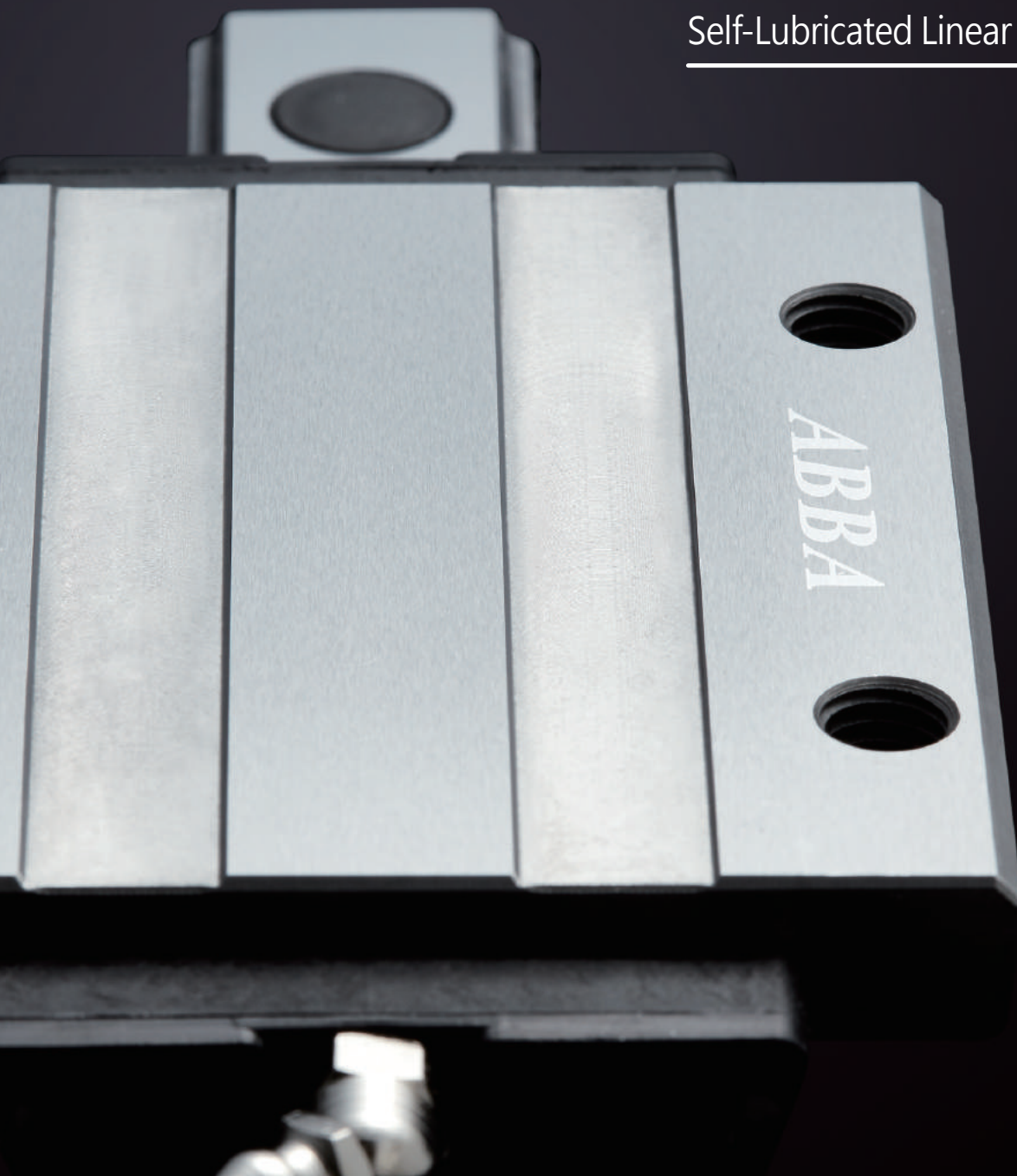
Linear Motion Components

Self-Lubricated Profile Rail Guide

Ball Screw

Cam Roller/Round Shaft Linear Guide

Self-Lubricated Linear Bearing



Self-Lubricated Profile Rail Guide

The first professional linear guideway manufacturer in Taiwan, putting patent self-lubricant and four-low linear guides into mass production.

↑ High accuracy

↑ High rigidity

↑ Low cost in maintenance

↑ Equivalent loading in four directions

↑ Built-in long life lubrication

↑ Green product

BR Lubrication Reservoir Kit (Optional)

BR lubrication reservoir kit is run by a high oil content of reservoir and optimization of film forming designed to provide adequate and proper amount of lubricant to grooves of rails, thus reaching good effect of environmental protection and extend relubrication intervals.

Effectively extend the relubrication intervals

Make supplementary periodically up to 4000km.

High reliability and interchangeability

Without moving the block out, end-users can install or replace BR lubrication reservoir kit by themselves easily.

High-performance lubrication oil

Compliance with ISO3448, viscosity grade 680. Perfectly compatible with the lubrication oil of blocks. Allowable temperature range: -10~50°C (working continuously) or -10~80 °C (working temporarily).

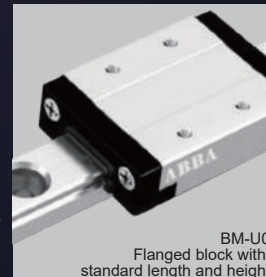
Friendly to environment

Through optimization of film forming methods to reduce the waste of lubrication oil, thus preventing environmental pollution.

New Robust ball retention system ▶

- Self-Lubrication reservoir
- Optimized seal design
- Robust and compact design
- High accuracy, long life, low noise
- Low installation and maintenance cost
- Interchangeability for H grade of blocks and rails

BM – Miniature series

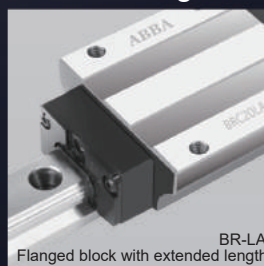


More

BM-LU
Flanged block with extended length and standard height

BM-U0
Flanged block with standard length and height

BR – Un-caged ball series



More

BR-A0
Flanged block with standard length
BR-R0
Slim-line block with extended height
BR-LR
Slim-line block with extended length
BR-U0
Slim-line with standard height
BR-SU
Slim-line with short length

BR-LA
Flanged block with extended length

BC – Caged ball series



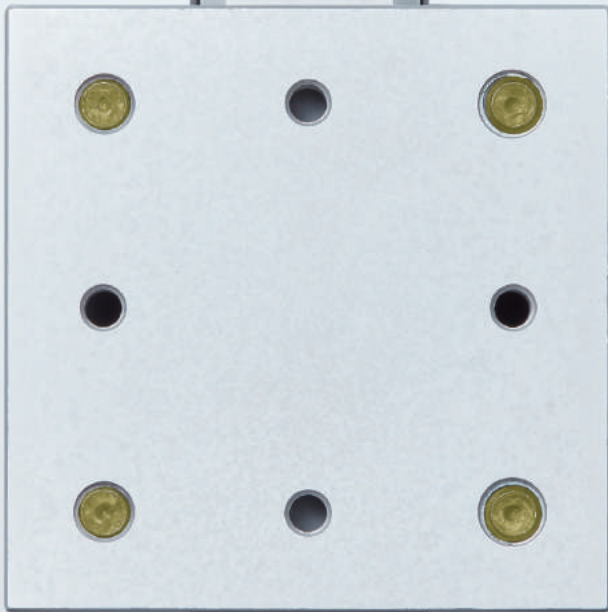
More

BC-A0
Flanged block with standard length and height
BC-LA
Flanged block with extended length and standard height
BC-R0
Slim-line block with standard length and extended height
BC-LR
Slim-line block with extended length and height

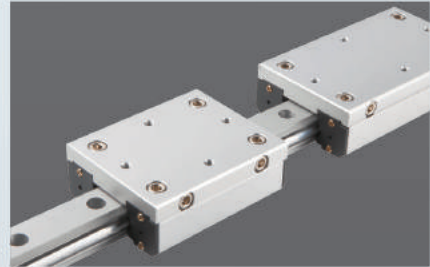
BC-A0
Flanged block with standard length and height

Cam Roller/Round Shaft Linear Guide

- Low noise
- Lubrication not required
- Rust-proof guide rail
- Adjustable roller clearance on carriage
- Heat treated & hard chromium plated SUJ2 round shaft
- Easy installation



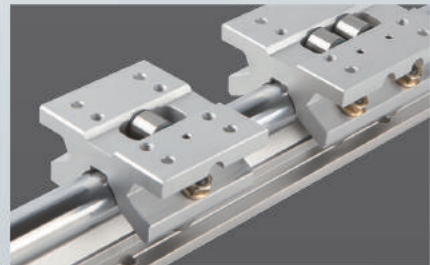
Cam Roller Linear Guide



- More:**
- CRC (Standard type)
 - CRD (Dust-Proof type)
 - CRE (Economic type)

- Adjustable roller clearance on block
- Lubrication not required
- Low noise
- Easy installation
- Rust-Proof guide rail

Round Shaft Linear Guide



- More:**
- RLG (Standard type)
 - RLR (Impact resistance type)

- Heat treated and hard chromium plated SUJ2 shaft
- Shaft is fully supported to prevent unwanted shaft deflection in heavy load and long stroke conditions
- Available in Standard, or Extended Length Block Type

Ball Screw

ABBA provides Ball Screw as solution to power transmission field, covering rolled-made and ground-made.



High reliability

Smooth operation

High durability

High rigidity and preload

External Ball Circulation Nuts

- Offers smoother ball running
- Offers better solution and quality for long lead or large diameter ball screws

Internal Ball Circulation Nuts

- Smaller outer diameter
- Suitable for the machine with limit space for ball screws installation

High Lead Ball Screws

High DN value

The DN value can be 130,000 in normal case. For some special cases, for example on a fixed ends case, the DN value can be as high as 140,000.

High Speed

100m/min and even higher traverse speed for machine tools for high performance cutting.

High Rigidity

Both the screw and ballnut are surface hardened to a specific hardness and case depth to maintain high rigidity and durability.

Low Noise

Special design of ball circulation tubes offer smooth ball circulation inside the ballnut. Accurate ball circle diameter (BCD) through whole threads for consistent drag torque and low noise.

Rolled / Ground Series Support Unit of Ball Screw



More:

FSU (DIN69051)	
FDU (DIN69051)	
FSI	FDI
FSC	FSE
FSB	FSG
RSK (without wipers)	
RSY	RSU
RSH	

FSC



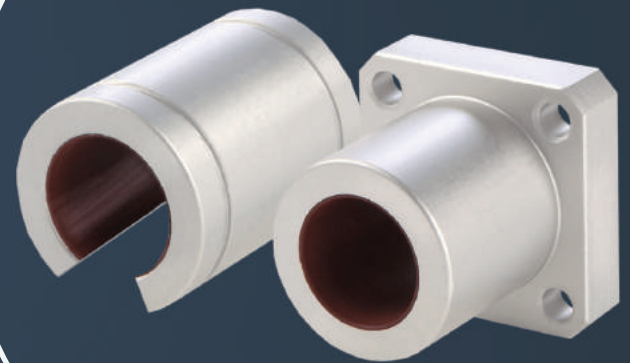
More:

FK (Fixed side)
FF (Floated side)
BK (Fixed side)
BF (Floated side)
EK (Fixed side)
EF (Floated side)

BK Fixed side

Self-Lubricated Linear Bearing

- Self-Lubricated
- Excellent Wear Resistance
- High Impact Capability
- Interchangeability
- High Load Capacity
- Low Friction



Characteristics

Excellent Wear Resistance

Unlike linear ball bearing that requires running on high hardness heat treated shaft (SUJ2), Self-Lubricated Linear Bearing can be used with Hard Chrome Plated Shaft (S45C). Under correct use, the life expectancy is much higher than linear ball bearings.

Interchangeability

Full range of ABBA Self-Lubricated Linear Bearings product including Standard, Thin Profile, Profile, and Flanged Type. All Self-Lubricated bearing are interchangeable with our Linear Ball Bearing products.

Multi-Functions

Suitable for linear, rotary, or combination of both motions.

High Impact Capability

Great capabilities of dampening high impacts, vibrations, and uneven loads while keeping the components from damaging.

Self-Lubricating

Lubrifications are not required; however, the use of adequate lubricants can minimize frictions and wear.

High Load Capacity

ABBA Self-Lubricating Linear Bearings can withstand average 3~4 times load capacity over linear ball bearings.

Chemical and Corrosion Resistance

Great resistance to corrosion allows the bearing to be operating or submerging in alcohol, gasoline, water, oil and stand up to harsh environments.

Reliable

Reliable bearing dimensions due to the linear will not expand to water or oil unlike general industrial use plastic. Thermal expansion effect is also minimal to the bearing, and will not cause binding to the shaft

Low Friction

Low Coefficient of Friction eliminates oscillating, which is suitable for continuous and intermittent motions.

Substitutability

In the case of the shaft had been scored by linear ball bearing, self-lubricated linear bearing can be installed to the damaged shaft after slight sanding the shaft by sand paper as emergency repair.

Quiet Operation

Quieter operation over linear ball bearing at any operating speed.

Wide Range of Applications

Produces minimum particulates, which is suitable for vacuum and clean rooms applications. Applicable applications include Automation Machines, Transfer Equipment, Vice Robotic Arms, Robots, Positioning Device, Automotive, Office Equipment, Semi-Conductor Manufacturing, Bio-Chemical Plant, Food Processing Plant, and Fabric Manufacturing related applications.

SM Round Profile Type



More

- SM Standard Type Self-Lubricated Linear Bearing
- SMP Open Type Self-Lubricated Linear Bearing
- SMT Thin Profile Self-Lubricated Linear Bearing

SMK Square Flange Type



More

- SMK Square Flange Self-Lubricated Linear Bearing
- SMK-L Long Type Square Flange Self-Lubricated Linear Bearing

SMF Round Flange Type



More

- SMF Round Flange Self-Lubricated Linear Bearing
- SMF-L Long Type Round Flange Self-Lubricated Linear Bearing
- SMFD Center Flange Self-Lubricated Linear Bearing



An Ewellix company



**Refined Quality
Global Service**

ABBA Linear Tech Co., Ltd.

No.123, Sec.1, Yuemei Rd., Zhongli Dist.,
Taoyuan City 32053, Taiwan (R.O.C.)

Tel +886 3 4988326

Fax +886 3 4988279

email abba@ewellix.com

www.abbalinear.com

